

# HÖRMANN

---

Ihr Fachhändler für Tore, Türen und Antriebe.

---

[direkt zur Webseite](#)

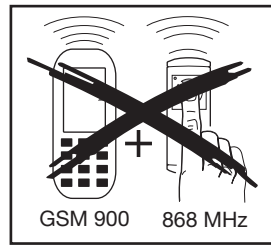
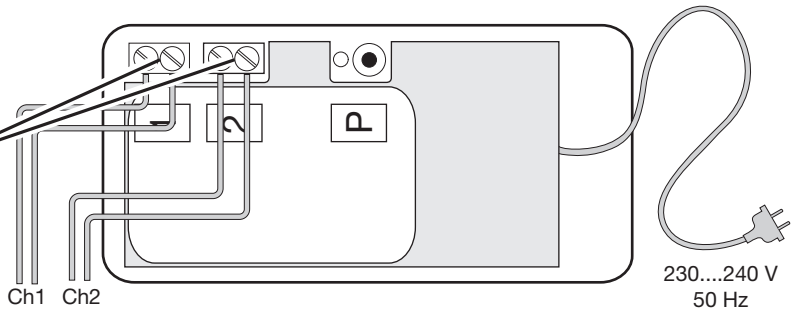
Bereitgestellt von:

[www.tor7.de](http://www.tor7.de)

**tor7**   
Alles für Ihr Garagentor

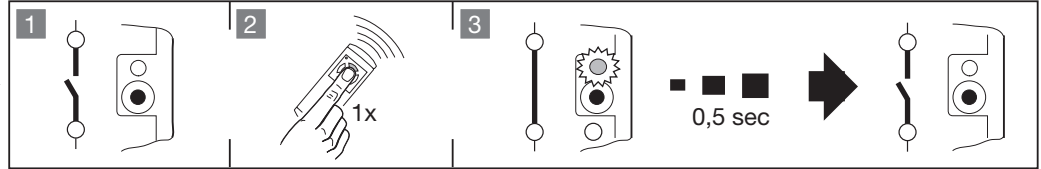
1

max.  
500 W / 250 V AC  
2,5 A / 30 V DC



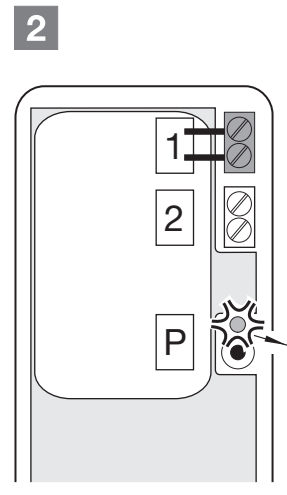
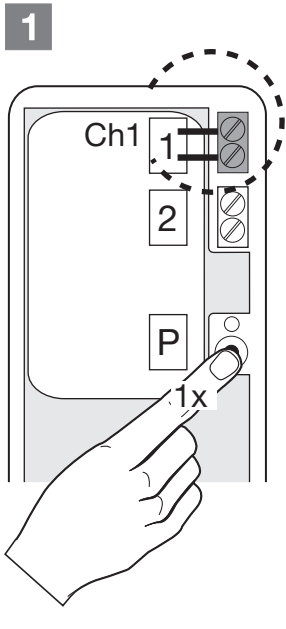
GSM 900 868 MHz

230...240 V  
50 Hz

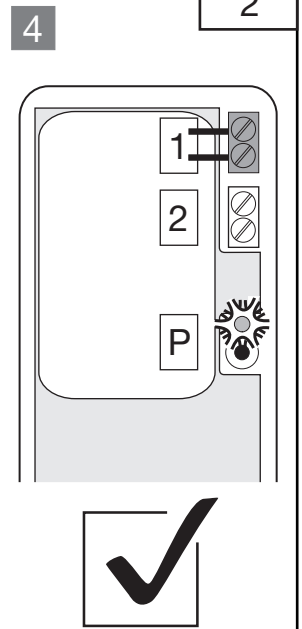
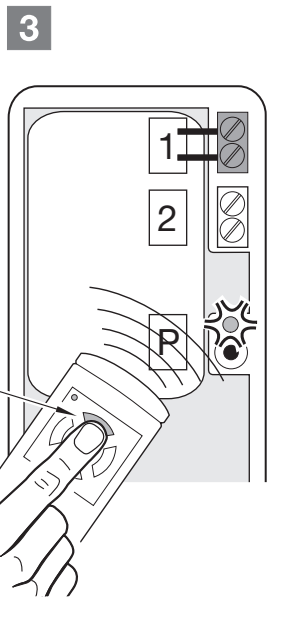


# HET2

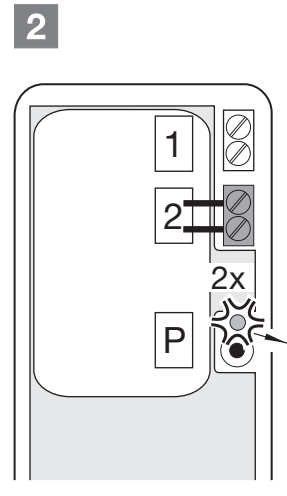
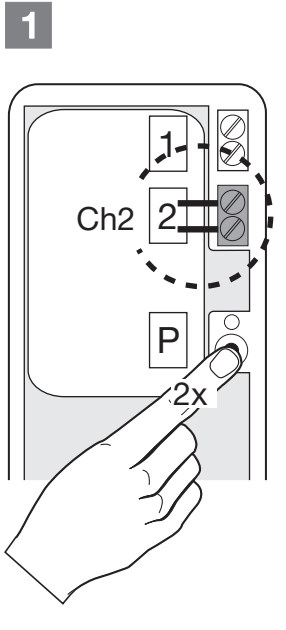
2



max. 20 sec



3



max. 20 sec

